



# 2026 SUMMER CAMP ADVENTURE AWAITS!

NORTH PENN YMCA

[NorthPennYMCA.org](http://NorthPennYMCA.org)



# TABLE OF CONTENTS



Welcome.....	3
Why North Penn YMCA Summer Camp .....	4
Skippack Summer Camp at Trinity Christian-Skipack.....	5
Harleysville Summer Camp at Indian Valley Family YMCA.....	6
Counselor In Training Program at Indian Valley Family YMCA.....	7
Souderton Summer Camp at E.M.C Elementary.....	8
Harleysville Pre-K Camp & K-1 Camp at Alumni Ave. Early Childhood Center .....	9
Lansdale Summer Camp at Inglewood Elementary .....	10
Lansdale Summer Camp at Lansdale Catholic.....	11
Lansdale Summer Camp at Lansdale Area Family YMCA.....	12
Hatfield Summer Camp at School Road Park .....	13
Field Trip Information .....	14
Registration .....	15



# WELCOME!



## REGISTRATION

**Opens Feb 2  
9 AM**



## WHAT TO BRING

- Packed lunch  
(camp is NUT FREE)
- Water bottle
- Proper clothes
- Swimsuit
- Towel
- Sneakers
- Medication if required/needed

No refrigeration or microwave available. Campers will be active and may get dirty. Please dress your camper appropriately. See parent handbook for details.

## CAMP COLOR REFERENCE

**INDIAN VALLEY**

**HARLEYSVILLE**

**LANSDALE**

North Penn YMCA has been a trusted summer camp destination for Montgomery County families for decades, offering unique and diverse experiences at each location. Each camp provides a variety of outdoor and recreational activities tailored to its site, including sports, games, swimming and enrichment education, ensuring every camper finds something they love.

With weekly themes, campers at every location enjoy new adventures, make lasting friendships, and grow in mind, body, and spirit—all while exploring the distinctive offerings that make each camp truly one of a kind!

Adventure Awaits!



## PARENT OPEN HOUSES

**Indian Valley  
Branch &  
Harleysville  
Early Childhood  
Center**

**Feb 16  
5-7 PM**

**April 7  
5-7 PM**

**Lansdale Branch**

**Feb 18  
4:30-6:30 PM**

## FINANCIAL ASSISTANCE AVAILABLE

At the Y, strengthening community is our cause. We believe all children should have the opportunity to learn, grow and thrive. Financial assistance makes summer day camp available to those kids in need.

- All financial assistance applications must be attached to camp registration forms.
- All applicants for camp Financial Assistance must apply for ELRC benefits for child care.
- Financial Assistance applications and child care addendums may be obtained online at [NorthPennYMCA.org](http://NorthPennYMCA.org) or at one of the branches.

**Summer Camp EHFA application due date:**  
May 22, 2026

The application process is confidential and requires proof of financial need.

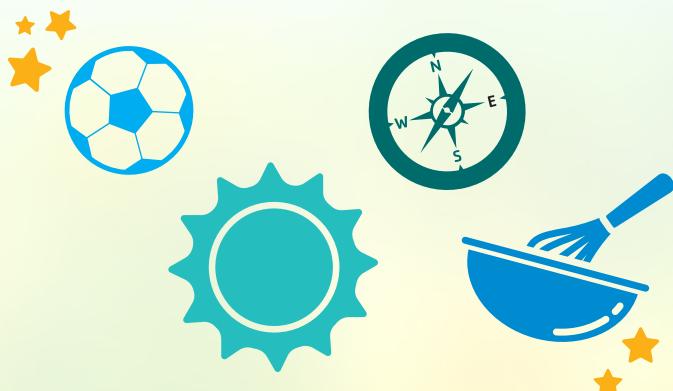
To learn more , please visit  
[NorthPennYMCA.org/join-our-y/financial-assistance](http://NorthPennYMCA.org/join-our-y/financial-assistance)

## FAMILY CORNER

# WHY NORTH PENN YMCA SUMMER CAMP

Campers will grow, build skills and gain self-confidence in a safe, values-based environment. What makes us the best choice for your child?

- ✓ **SAFE, ENJOYABLE AND AFFORDABLE** option for families
- ✓ **WEEKLY THEMES**, activities and special events
- ✓ **AGE-APPROPRIATE CURRICULUM** that encourages learning, exploration and fun!
- ✓ **HIGHLY TRAINED** and **ENGAGED** camp staff
- ✓ **OUTDOOR ACTIVITIES**
- ✓ **ON-SITE PRESENTERS!**
- ✓ **FIELD TRIPS AND EVENTS** included in camp fee
- ✓ **A DIFFERENT ADVENTURE** each week
- ✓ **CAMPERS ARE GROUPED BY AGE**



**REGISTER NOW!** Visit [NorthPennYMCA.org/summer-camp](http://NorthPennYMCA.org/summer-camp)

## SHOW OFF YOUR SPIRIT!

### 2026 WEEKLY THEMES

<b>June 15-19</b>	Welcome to Camp
<b>June 22-26</b>	Getting Back to Nature
<b>June 29-July 3</b>	Stars and Stripes
<b>July 6-10</b>	Under the Sea
<b>July 13-17</b>	We're Going On Safari
<b>July 20-24</b>	Holidays In July
<b>July 27-31</b>	Inquisitive Minds Wants to Know
<b>Aug 3-7</b>	Create, Color, Imagine!
<b>Aug 10-14</b>	Wacky, Wonderful World
<b>Aug 17-21</b>	Let's Play A Game
<b>Aug 24-28</b>	Farewell to Summer



**Adventure Awaits!** • 4 •

# SKIPPACK SUMMER CAMP

## AT TRINITY CHRISTIAN-SKIPPACK

2009 Church Rd, Skippack, PA

Traditional day camp includes activities such as large and small group activities, art & crafts, outdoor games, swimming and more. Our camp goal is to aid campers in building confidence, learning new skills, making friends and having fun. Themes, special activities, field trips, swimming and events make it a different adventure each week. Campers are grouped by age.

**2026 CAMP DATES:** June 15–August 14

**AGE RANGE:** Grades K– 5

### SCHEDULE

- 5 days/week | Monday–Friday
- 3 days/week | Tuesday–Thursday

### TIMES

- Full day | 9 AM–4 PM
- Extended day | 7 AM–6 PM

### REGISTRATION DEPOSITS

- \$25 non-refundable deposit due upon registration per week per child.
- This deposit is deducted from the final payment due two weeks before the start of that weekly session.

### QUESTIONS?

Contact Kristy Szychulski, Child Care Program Director, 215.723.3569 ext 115  
[kristys@northpennymca.org](mailto:kristys@northpennymca.org)

GRADES Sept '26	SCHEDULES	TIME	FIRST CHILD PRICE	ADD CHILD PRICE	JUN 15–19	JUN 22–26	JUN 29 –JUL 3	JUL 6–10	JUL 13–17	JUL 20–24	JUL 27–31	AUG 3–7	AUG 10–14	AUG 17–21	AUG 24–28
<b>SKIPPACK SUMMER CAMP</b>															
K-5	3 DAY FULL	9 AM– 4 PM	\$215	\$205											
K-5	5 DAY FULL	9 AM– 4 PM	\$295	\$280											
K-5	3 DAY EXTENDED	7 AM– 6 PM	\$250	\$225											
K-5	5 DAY EXTENDED	7 AM– 6 PM	\$350	\$335											

**NORTH PENN YMCA | Skippack Summer Camp**  
 2009 Church Rd, Skippack, PA [NorthPennYMCA.org](http://NorthPennYMCA.org)

# HARLEYSVILLE SUMMER CAMP

## AT INDIAN VALLEY FAMILY YMCA

» 890 Maple Ave. Harleysville, PA

Traditional day camp includes activities such as large and small group activities, art & crafts, outdoor games, swimming and more. Our camp goal is to aid campers in building confidence, learning new skills, making friends and having fun. Themes, special activities, field trips, swimming and events make it a different adventure each week. Campers are grouped by age.

**2026 CAMP DATES:** June 15–August 28

**AGE RANGE:** Grades K–8

### SCHEDULE

- 5 days/week | Monday–Friday
- 3 days/week | Tuesday–Thursday

### TIMES

- Full day | 9 AM–4 PM
- Extended day | 7 AM–6 PM

### REGISTRATION DEPOSITS

- \$25 non-refundable deposit due upon registration per week per child.
- This deposit is deducted from the final payment due two weeks before the start of that weekly session.

### QUESTIONS?

Contact Kristy Szychulski, Child Care Program Director, 215.723.3569 ext 115  
kristys@northpennymca.org

GRADES Sept '26	SCHEDULES	TIME	FIRST CHILD PRICE	ADD CHILD PRICE	JUN 15–19	JUN 22–26	JUN 29– JUL 3	JUL 6–10	JUL 13–17	JUL 20–24	JUL 27–31	AUG 3–7	AUG 10–14	AUG 17–21	AUG 24–28
<b>HARLEYSVILLE SUMMER CAMP AT INDIAN VALLEY FAMILY YMCA</b>															
K–8	3 DAY FULL	9 AM– 4 PM	\$215	\$205											
K–8	5 DAY FULL	9 AM– 4 PM	\$295	\$280											
K–8	3 DAY EXTENDED	7 AM– 6 PM	\$250	\$225											
K–8	5 DAY EXTENDED	7 AM– 6 PM	\$350	\$335											

**NORTH PENN YMCA | Harleysville Summer Camp at Indian Valley Family YMCA**

890 Maple Ave, Harleysville, PA | NorthPennYMCA.org

ELRC is accepted at this location.

# COUNSELOR IN TRAINING PROGRAM AT INDIAN VALLEY FAMILY YMCA

» 890 Maple Ave. Harleysville, PA

The Indian Valley YMCA Counselor in Training (CIT) Program is a structured leadership program for campers grade 9 and up designed to build responsibility, confidence, and workplace readiness in a supervised camp environment.

## PROGRAM OVERVIEW

The CIT Program allows teens to gain hands-on experience working alongside trained camp counselors while learning essential leadership, and communication skills. Participants are guided by YMCA staff and are expected to model the YMCA's core values: trustworthy, responsible, caring, honest, and respectful. CIT's are required to participate in a minimum of 6 weeks of camp in order to receive the full benefit of the program. These weeks do not need to be consecutive.

## SKILLS YOUR TEEN WILL DEVELOP

- Build leadership, teamwork, and communication skills
- Learn responsibility and professionalism in a workplace setting
- Receive free CPR and first aid training
- Gain experience through counselor job shadowing
- Participate in structured planning, implementing activities, and field trip group management

These skills help prepare teens for future employment, volunteering and leadership roles.

## ROLES & EXPECTATIONS

CITs assist camp counselors with daily activities and camper supervision. They are expected to:

- Work cooperatively with staff and peers
- Build positive, age-appropriate relationships with campers
- Serve as role models to younger campers
- Follow YMCA policies and safety guidelines

## APPLICATION PROCESS

- To ensure readiness and maturity, the application process includes:
- Online interview application
- In-person interview
- Completion of a written application
- Two teacher references

Acceptance into the program is based on attitude, responsibility, and ability to serve as a leader.

## PROGRAM COST

If an applicant is accepted into the CIT program, they will receive a discount weekly rate of \$125.

## QUESTIONS?

Kristy Szychulski, Child Care Program Director,  
215.723.3569 ext 115, [kristys@northpennymca.org](mailto:kristys@northpennymca.org)

GRADES Sept '26	SCHEDULES	TIME	RATE	JUN 15-19	JUN 22-26	JUN 29- JUL 3	JUL 6-10	JUL 13-17	JUL 20-24	JUL 27-31	AUG 3-7	AUG 10-14	AUG 17-21	AUG 24-28
<b>CIT PROGRAM AT INDIAN VALLEY FAMILY YMCA</b>														
Grade 9+	5 DAY FULL	9 AM- 4 PM	\$125											
Grade 9+	5 DAY EXTENDED	7 AM- 6 PM	\$150											

**NORTH PENN YMCA | CIT Program at Indian Valley Family YMCA**  
890 Maple Ave, Harleysville, PA | [NorthPennYMCA.org](http://NorthPennYMCA.org)

ELRC is accepted at this location.

# SOUDERTON SUMMER CAMP

## AT E.M.C. ELEMENTARY

» 143 S School Ln, Souderton, PA

Traditional day camp includes activities such as large and small group activities, art & crafts, outdoor games, swimming and more. Our camp goal is to aid campers in building confidence, learning new skills, making friends and having fun. Themes, special activities, field trips, swimming and events make it a different adventure each week. Campers are grouped by age.

**2026 CAMP DATES:** June 15–August 7

**AGE RANGE:** Grades K-5

### SCHEDULE

- 5 days/week | Monday–Friday
- 3 days/week | Tuesday–Thursday

### TIMES

- Full day | 9 AM–4 PM
- Extended day | 7 AM–6 PM

### REGISTRATION DEPOSITS

- \$25 non-refundable deposit due upon registration per week per child.
- This deposit is deducted from the final payment due two weeks before the start of that weekly session.

### QUESTIONS?

Contact Kristy Szychulski, Child Care Program Director, 215.723.3569 ext 115  
[kristys@northpennymca.org](mailto:kristys@northpennymca.org)

GRADES Sept '26	SCHEDULES	TIME	FIRST CHILD PRICE	ADD CHILD PRICE	JUN 15–19	JUN 22–26	JUN 29 –JUL 3	JUL 6–10	JUL 13–17	JUL 20–24	JUL 27–31	AUG 3–7	AUG 10–14	AUG 17–21	AUG 24–28
<b>SOUDERTON SUMMER CAMP AT E.M.C. ELEMENTARY</b>															
K-5	3 DAY FULL	9 AM–4 PM	\$215	\$205											
K-5	5 DAY FULL	9 AM–4 PM	\$295	\$280											
K-5	3 DAY EXTENDED	7 AM–6 PM	\$250	\$225											
K-5	5 DAY EXTENDED	7 AM–6 PM	\$350	\$335											

**NORTH PENN YMCA | SOUDERTON SUMMER CAMP AT E.M.C. ELEMENTARY**

143 S School Ln, Souderton, PA 215.368.1601 | [NorthPennYMCA.org](http://NorthPennYMCA.org)

ELRC is accepted at this location.

# HARLEYSVILLE PRE-K\* & K-1 CAMP

## AT ALUMNI AVE. EARLY CHILDHOOD CENTER

» 311 Alumni Ave. Harleysville, PA

Join us this summer at the Harleysville Early Childhood Center! At our schoolhouse adjacent to scenic park land, young campers will engage in fun, experiential learning activities that promote confidence, teamwork and physical wellness. The K-1 program includes field trips, special events, and swimming twice weekly.

**2026 CAMP DATES:** June 15–August 14

**AGE RANGE:** 3–7 years

### SCHEDULE

- 5 days/week | Monday–Friday
- 3 days/week | Tuesday–Thursday

### TIMES

- Full day | 9 AM–4 PM
- Extended day | 7 AM–6 PM

### PRE-K CAMP FOR AGES 3–5

\* For pricing and information about Half Day or Full Day enrollment, please contact Diane Greve.

All Pre-K campers must be potty trained.

### REGISTRATION DEPOSITS

- \$25 non-refundable deposit due upon registration per week per child.
- This deposit is deducted from the final payment due two weeks before the start of that weekly session.

### QUESTIONS?

Contact Diane Greve, Branch Director  
dianeg@northpennymca.org,  
215-256-0767

GRADES Sept '26	SCHEDULES	TIME	FIRST CHILD PRICE	ADD CHILD PRICE	JUN 15–19	JUN 22–26	JUN 29 –JUL 3	JUL 6–10	JUL 13–17	JUL 20–24	JUL 27–31	AUG 3–7	AUG 10–14	AUG 17–21	AUG 24–28
<b>K-1 CAMP</b> (includes swimming & field trips)															
K-1	3 DAY FULL	9 AM–4 PM	\$215	\$205											
K-1	5 DAY FULL	9 AM–4 PM	\$295	\$280											
K-1	3 DAY EXTENDED	7 AM–6 PM	\$250	\$225											
K-1	5 DAY EXTENDED	7 AM–6 PM	\$350	\$335											

**NORTH PENN YMCA | Harleysville Pre-K and K-1 Summer Camp**  
311 Alumni Ave., Harleysville, PA | NorthPennYMCA.org

ELRC is accepted at this location.

# LANSDALE SUMMER CAMP

## AT INGLEWOOD ELEMENTARY

» 1313 Allentown Rd, Lansdale, PA

Traditional day camp includes activities such as large and small group activities, art & crafts, outdoor games, swimming and more. Our camp goal is to aid campers in building confidence, learning new skills, making friends, and having fun. Themes, special activities, field trips, swimming and events make it a different adventure each week. Campers are grouped by age.

**2026 CAMP DATES:** June 22–August 14

**AGE RANGE:** Grades K–8

### SCHEDULE

- 5 days/week | Monday–Friday
- 3 days/week | Tuesday–Thursday

### TIMES

- Full day | 9 AM–4 PM
- Extended day | 7 AM–5:30 PM

### REGISTRATION DEPOSITS

- \$25 non-refundable deposit due upon registration per week per child.
- This deposit is deducted from the final payment due two weeks before the start of that weekly session.

### QUESTIONS?

Contact our camp team at [camp@northpennymca.org](mailto:camp@northpennymca.org)

GRADES Sept '26	SCHEDULES	TIME	FIRST CHILD PRICE	ADD CHILD PRICE	JUN 15–19	JUN 22–26	JUN 29 –JUL 3	JUL 6–10	JUL 13–17	JUL 20–24	JUL 27–31	AUG 3–7	AUG 10–14	AUG 17–21	AUG 24–28
<b>LANSDALE SUMMER CAMP AT INGLEWOOD ELEMENTARY</b>															
K–8	3 DAY FULL	9 AM–4 PM	\$215	\$205											
K–8	5 DAY FULL	9 AM–4 PM	\$295	\$280											
K–8	3 DAY EXTENDED	7 AM–5:30 PM	\$250	\$225											
K–8	5 DAY EXTENDED	7 AM–5:30 PM	\$350	\$335											

**NORTH PENN YMCA | Lansdale Summer Camp at Inglewood Elementary**  
1313 Allentown Rd, Lansdale, PA | [NorthPennYMCA.org](http://NorthPennYMCA.org)

# LANSDALE SUMMER CAMP

## AT LANSDALE CATHOLIC

» 700 Lansdale Ave. Lansdale, PA

Camp at Lansdale Catholic provides youth the opportunity to have fun this summer with recreational activities that embrace imagination and interest. Campers will engage in activities such as crafts, swimming, and traditional camp games and sports. Our activities promote camp spirit, socialization, physical and emotional wellness and help build self-esteem.

**2026 CAMP DATES:** June 22–August 14

**AGE RANGE:** Grades K–8

### SCHEDULE

- 5 days/week | Monday–Friday
- 3 days/week | Tuesday–Thursday

### TIMES

- Full day | 9 AM–4 PM
- Extended day | 7 AM–5:30 PM

### REGISTRATION DEPOSITS

- \$25 non-refundable deposit due upon registration per week per child.
- This deposit is deducted from the final payment due two weeks before the start of that weekly session.

### QUESTIONS?

Contact our camp team at [camp@northpennymca.org](mailto:camp@northpennymca.org)

GRADES Sept '26	SCHEDULES	TIME	FIRST CHILD PRICE	ADD CHILD PRICE	JUN 15–19	JUN 22–26	JUN 29 –JUL 3	JUL 6–10	JUL 13–17	JUL 20–24	JUL 27–31	AUG 3–7	AUG 10–14	AUG 17–21	AUG 24–28
<b>LANSDALE SUMMER CAMP AT LANSDALE CATHOLIC</b>															
K–8	3 DAY FULL	9 AM–4 PM	\$215	\$205											
K–8	5 DAY FULL	9 AM–4 PM	\$295	\$280											
K–8	3 DAY EXTENDED	7 AM–5:30 PM	\$250	\$225											
K–8	5 DAY EXTENDED	7 AM–5:30 PM	\$350	\$335											

**NORTH PENN YMCA | Lansdale Summer Camp at Lansdale Catholic**  
700 Lansdale Ave., Lansdale, PA | [NorthPennYMCA.org](http://NorthPennYMCA.org)

# LANSDALE SUMMER CAMP

## AT LANSDALE AREA FAMILY YMCA

» 608 E Main St, Lansdale, PA

Traditional day camp includes activities such as large and small group activities, art & crafts, outdoor games, swimming and more. Our camp goal is to aid campers in building confidence, learning new skills, making friends and having fun. Themes, special activities, field trips, swimming and events.

**2026 CAMP DATES:** June 22–August 28

**AGE RANGE:** Grades 1–8

### SCHEDULE

- 5 days/week | Monday–Friday
- 3 days/week | Tuesday–Thursday

### TIMES

- Full day | 9 AM–4 PM
- Extended day | 7 AM–5:30 PM

### REGISTRATION DEPOSITS

- \$25 non-refundable deposit due upon registration per week per child.
- This deposit is deducted from the final payment due two weeks before the start of that weekly session.

### QUESTIONS?

Contact our camp team at [camp@northpennymca.org](mailto:camp@northpennymca.org)

GRADES Sept '26	SCHEDULES	TIME	FIRST CHILD PRICE	ADD CHILD PRICE	JUN 15–19	JUN 22–26	JUN 29 –JUL 3	JUL 6–10	JUL 13–17	JUL 20–24	JUL 27–31	AUG 3–7	AUG 10–14	AUG 17–21	AUG 24–28
<b>LANSDALE SUMMER CAMP AT LANSDALE FAMILY YMCA</b>															
1–8	3 DAY FULL	9 AM–4 PM	\$215	\$205											
1–8	5 DAY FULL	9 AM–4 PM	\$295	\$280											
1–8	3 DAY EXTENDED	7 AM–5:30 PM	\$250	\$225											
1–8	5 DAY EXTENDED	7 AM–5:30 PM	\$350	\$335											

**NORTH PENN YMCA | Lansdale Summer Camp at Lansdale Family YMCA**  
608 E. Main St., Lansdale, PA | 215.368.1601 | [NorthPennYMCA.org](http://NorthPennYMCA.org)

ELRC is accepted at this location.

# HATFIELD SUMMER CAMP

## AT SCHOOL ROAD PARK

» 1619 School Rd, Hatfield, PA

Camp in Hatfield Township provides youth with recreational activities that embrace imagination and interest. Campers will have the opportunity to engage in crafts, performances and group projects. In addition, campers will participate in traditional summer camp activities in the great outdoors. These include sports, games, team building, science and theme-related special events. Our activities promote camp spirit, socialization, physical and emotional wellness and help build self-esteem.

**2026 CAMP DATES:** June 22–August 28

**AGE RANGE:** Grades K–6

### SCHEDULE

- 5 days/week | Monday–Friday
- 3 days/week | Tuesday–Thursday

### TIME

- 8:00 AM – 5:00 PM

### REGISTRATION DEPOSITS

- \$25 non-refundable deposit due upon registration per week per child.
- This deposit is deducted from the final payment due two weeks before the start of that weekly session.

### QUESTIONS?

Contact our camp team at [camp@northpennymca.org](mailto:camp@northpennymca.org)

GRADES Sept '26	SCHEDULES	TIME	FIRST CHILD PRICE	ADD CHILD PRICE	JUN 15–19	JUN 22–26	JUN 29 –JUL 3	JUL 6–10	JUL 13–17	JUL 20–24	JUL 27–31	AUG 3–7	AUG 10–14	AUG 17–21	AUG 24–28
HATFIELD SUMMER CAMP AT SCHOOL ROAD PARK															
K-6	RESIDENT 3 DAY	8 AM– 5 PM	\$155	\$145											
K-6	RESIDENT 5 DAY	8 AM– 5 PM	\$255	\$215											
K-6	NON- RESIDENT 3 DAY	8 AM– 5 PM	\$215	\$205											
K-6	NON- RESIDENT 5 DAY	8 AM– 5 PM	\$295	\$280											

**NORTH PENN YMCA | Hatfield Summer Camp at School Road Park**  
1619 School Rd, Hatfield, PA | [NorthPennYMCA.org](http://NorthPennYMCA.org)

# FIELD TRIP INFORMATION

Starting the week of June 15, our camps will attend a special event or go on a field trip. The trip dates, times and locations are subject to change. On field trip days, ALL campers must arrive at their camp location by designated time which will be communicated to families prior to the trip. Campers must wear sneakers, have packed lunch, sunscreen and any other essential items. Detailed information for each trip will be shared by camp staff prior to each trip.

CAMP WEEK	INDIAN VALLEY YMCA E.M.C. ELEMENTARY TRINITY CHURCH	HARLEYSVILLE ALUMNI AVE. K-1 CAMP ONLY	LANSDALE YMCA SCHOOL RD. PARK	LANSDALE CATHOLIC INGLEWOOD
June 15-19	N/A	Limerick- Bowlero	N/A	N/A
June 22-26	Treehouse World	Morgan Log House	Zoo Visits the Y	Zoo Visits the Y
June 29- July 3	Mauch Chunk Lake	4th of July Celebration	Treehouse World	Treehouse World
July 6-10	Camden Aquarium	Zoo Trip	Mauch Chunk Lake	Mauch Chunk Lake
July 13-17	Safari Visitor	Perkiomen Creek Watershed	DaVinci Science Center	DaVinci Science Center
July 20-24	Movies	Movies	Movies	Movies
July 27-31	DaVinci Science Center	Legoland	Camden Aquarium	Camden Aquarium
August 3-7	Crayola Factory	Art Studio	Crayola Factory	Crayola Factory
August 10-14	Mad Science	Musical Production	Mad Science	Mad Science
August 17-21	Mauch Chunk Lake	N/A	Mauch Chunk Lake	N/A
August 24-28	N/A	N/A	N/A	N/A

## REGISTER

- All campers must have at least a North Penn YMCA Youth Program Membership (\$50/year).
- Camp locations are based upon the grade the camper is going into as of Sept 2026.
- Weekly tuition payments are due 2 weeks prior to the session start date. See the payment schedule in our Summer Camp Parent Handbook. All checks must be made payable to the North Penn YMCA.
- Registration requires a non-refundable deposit of \$25 per week to secure your child's spot in our camp.
- Due to size limitations at our camp locations, all registrations are on a first come, first serve basis. Please note, all camp locations must have 20 campers minimum enrolled for that location to open for the 2026 season.
- Camp registration packets are available at the Membership Desks or can be printed from our website. Completed summer camp registration packets for all locations can be dropped off at Indian Valley Family YMCA, Harleysville Early Childhood Center or Lansdale Area Family YMCA. Camp registration packets can also be filled out electronically and emailed to the camp directors.

## CAMP POLICY AND INFO

All parents are required to read our Summer Camp Parent Handbook, which outlines our camp policies, procedures, general rules, trip information, payment schedule and more! Our Parent Handbook is available for download on our website. Camp themes, specials, trips and daily schedule subject to change.

### WHAT FAMILIES ARE SAYING...

"Just wanted to share an experience I had in relation to a group of children (varying ages) and adult counselors at Mauch Chunk Lake Park. I am a former resident of Harleysville, born and raised, but moved with my husband and three small children to Lehighton/Jim Thorpe area 22 years ago. Last Thursday this large group arrived at the beach area of our local lake where a friend and I frequent and they were all so well behaved and respectful that my friend and I, who both work for local school districts, were so impressed that we had to ask one of the adults where they were from and when we found out I was so shocked, and pleased and so super proud to be witness to this incredible behavior from children from my own home town! FABULOUS!"

"My daughter absolutely loved the Summer Camp at the Harleysville YMCA Early Childhood Center. She attended the entire summer last year and loved all the fun activities and trips they had planned each week. She also made so many new friends and adored all of the caring counselors and staff. She cannot wait to go back again"